

8H7854-00

# **KODAK Dental Imaging Software**

## **Installation Guide for the KODAK1500 Intraoral Camera**

# Notice

©Carestream Health, Inc., 2009. No part of this publication may be reproduced, stored in a retrieval system, translated to another language, or transmitted in any form by any means, electronic, mechanical, photocopied, recorded, or otherwise, without prior written permission.

The information in this document is subject to change. Neither Carestream Health, Inc. nor any of its subsidiaries shall be liable for errors contained herein or for incidental damages in conjunction with the furnishing, performance, or use of this material.

The Kodak trademark and trade dress are used under license from Kodak. All other trademarks and registered trademarks are the property of their respective holders.

Manual Name: *KODAK Dental Imaging Software Installation Guide for the KODAK 1500 Intraoral Camera*

Part Number: 8H7854

Revision Number: 00

Print Date: August 2009

# Installing the KODAK 1500 Intraoral Camera

The Kodak dental imaging software contains a Kodak 1500 intraoral camera acquisition module that enables you to view, capture, and manipulate images from a camera on your computer.

For more information, see the following documents:

- *KODAK 1500 Intraoral Camera Quick Start Guide (8G8048)*
- *KODAK 1500 Intraoral Camera User's Guide (8G7939)*

## Getting Started

Before installing the Kodak dental imaging software, ensure that:

- Your computer includes the following system requirements:
  - Intel Pentium IV, 1.8 GHZ or higher
  - 512 MB RAM (1 G RAM for Windows Vista Ultimate, 32 bits version)
  - DVD drive
  - Standard CRT/LCD monitor with a minimum screen resolution of 1024 X 768
  - Direct X 9.0c supporting video board
  - USB 2.0 high-speed port
- Your computer uses one of the following Microsoft Windows operating systems:
  - Windows 2000 sp4
  - Windows XP SP2/SP3
  - Windows Vista Ultimate, 32 bits version
- You have uninstalled all previous versions of the Kodak dental imaging software and Kodak 1500 intraoral camera software.

## Installing the Software

To install the software, follow these steps:

- 1 Insert the software DVD in the DVD-ROM drive of the computer.

If the program does not start automatically, click **Start > Run** and enter **D:\setup.exe** if D is the letter for the DVD-ROM drive. If your DVD drive is represented by a different letter, substitute that letter for D.

The **Choose Setup Language** window is displayed.



**Figure 1 Choose Setup Language Window**

- 2 Select the installation language and click **OK**. The **Kodak Dental Imaging Software** welcome page and the **InstallShield Wizard** are displayed.

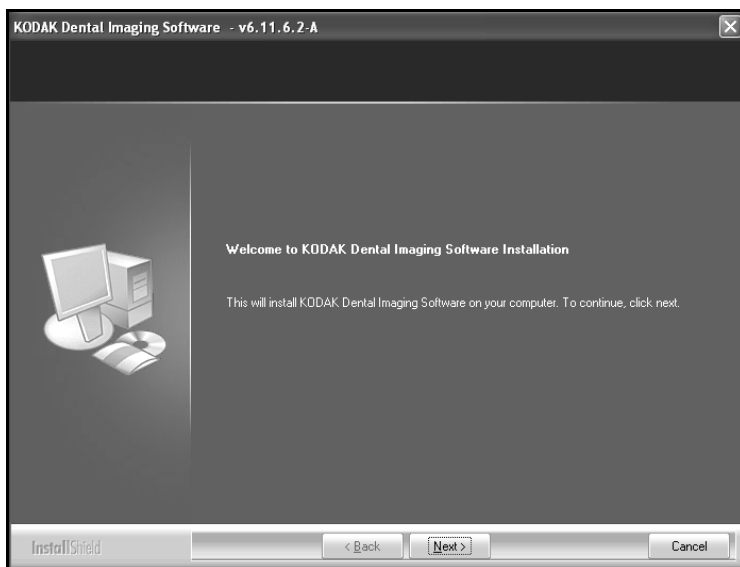


**Figure 2 Kodak Dental Imaging Software Welcome Page**



**Figure 3 InstallShield Wizard**

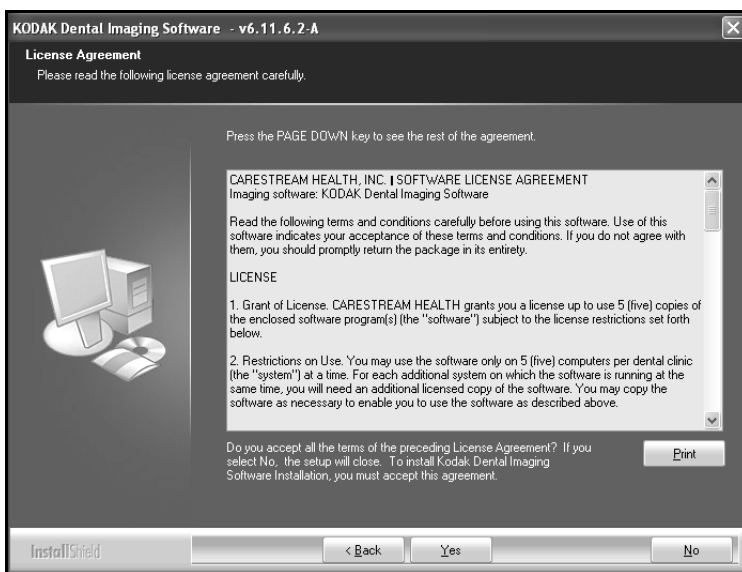
After the **InstallShield Wizard** verifies the operating system, the **Welcome to KODAK Dental Imaging Software Installation** window is displayed.



**Figure 4 Welcome to KODAK Dental Imaging Software Installation Window**

- 3 Click **Next**.

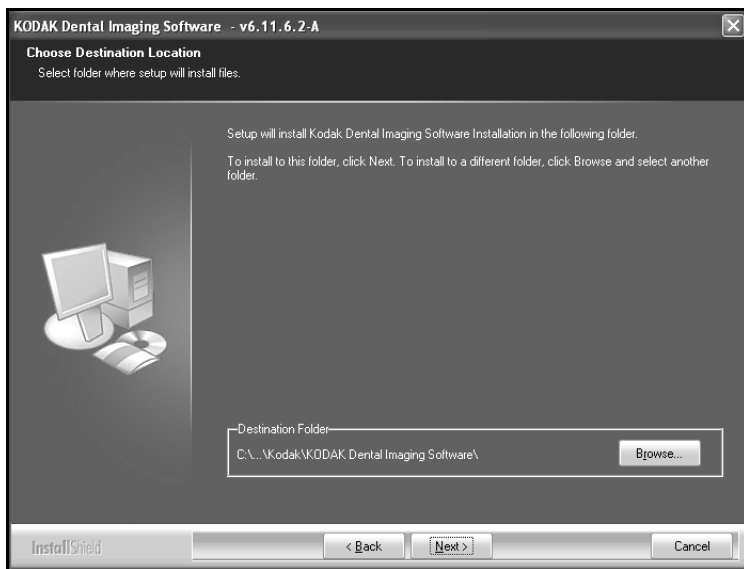
The **License Agreement** window is displayed.



**Figure 5 License Agreement Window**

- 4 Read the agreement and click **Yes**.

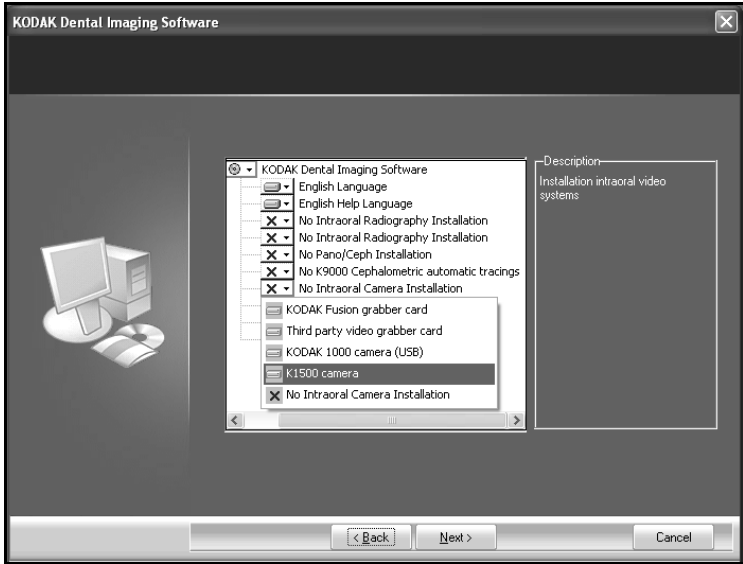
The **Choose Destination Location** window is displayed.



**Figure 6 Choose Destination Location Window**

- 5 Click **Next** to accept the default destination folder or browse to another folder.

The **KODAK Dental Imaging Software** window is displayed.



**Figure 7 KODAK Dental Imaging Software Window**

- 6 Select the dental components by doing the following:
  - Click the **No Intraoral Camera Installation** drop-down list and select **K1500 camera**.
  - Click the drop-down lists of each dental component and select the option for your location.

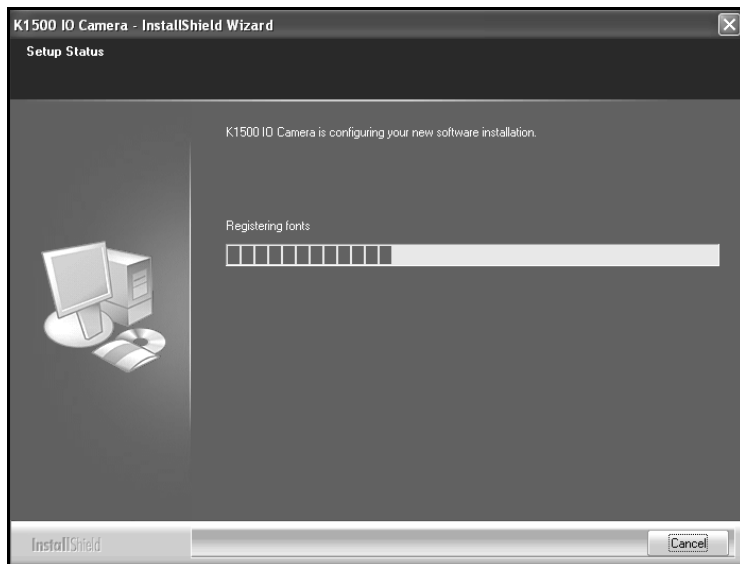


**Note:** **Patient file** is selected by default.

- 7 Click **Next**. The **InstallShield Wizard** is displayed, and the installation process runs automatically.

The **Kodak Patient File - InstallShield Wizard** is displayed while the patient files are installed on the hard drive.

The **K1500 IO Camera InstallShield Wizard** launches the installation.



**Figure 8** K1500 IO Camera InstallShield Wizard

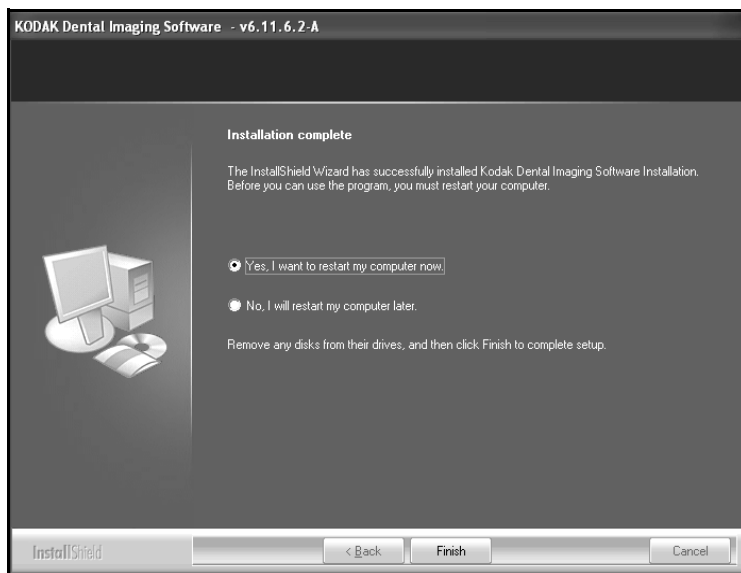
If the firewall is active, the **Windows Security Alert** window is displayed.



**Figure 9 Windows Security Alert Window**

Click **Unblock**.

The **Installation complete** window is displayed.



- 8 Select **Yes, I want to reboot my computer now**, and click **Finish**. The **Kodak Dental Imaging Software** icon is displayed on your desktop.

See the *KODAK 1500 Intraoral Camera Quick Start Guide (8H8048)* and the *KODAK 1500 Intraoral Camera User's Guide (8G7939)* to connect and use the camera.