

OR120-10

KODAK Orthodontic Imaging Software

Installation Guide

Notice

© PracticeWorks Inc., 2009. No part of this publication may be reproduced, stored in a retrieval system, translated to another language, or transmitted in any form by any means, electronic, mechanical, photocopied, recorded, or otherwise, without prior written permission.

NEITHER PRACTICEWORKS INC. NOR ITS PARENT OR ANY OF ITS SUBSIDIARIES MAKES ANY WARRANTY OF ANY KIND WITH RESPECT TO THIS MATERIAL INCLUDING, BUT NOT LIMITED TO, THE IMPLIED WARRANTIES OF MERCHANTABILITY, NONINFRINGEMENT, AND FITNESS FOR A PARTICULAR PURPOSE.

The information in this document is subject to change. Neither PracticeWorks Inc. nor its parent or any of its subsidiaries shall be liable for errors contained herein or for incidental damages in conjunction with the furnishing, performance, or use of this material.

The Kodak trademark and trade dress are used under license from Kodak.

RVG is a trademark of Carestream Health

All trademarks and registered trademarks are the property of their respective holders.

U.S. Federal law restricts the Kodak 9500 Cone Beam 3D system, Kodak 8000 digital panoramic unit, the Kodak 8000C digital panoramic and cephalometric unit, the Kodak CR 7400 digital radiography unit, the Kodak RVG 5000/6000 sensors, the Kodak RVG 6100 sensor, Kodak 9000C/9000C 3D extraoral and panoramic imaging system, the Kodak 1000 intraoral video camera, and the Kodak 2000/2100/2200 intraoral x-ray units to sale by or on the order of a dentist or physician.

Manual Name: *KODAK Orthodontic Imaging Software Installation Guide*

Part Number: OR120

Revision Number: 10

Print Date: February 2009

Installing KODAK Orthodontic Imaging Software

This guide describes the process for new and upgrade installations of the Kodak orthodontic imaging software. Read this document carefully before installing the new software.

This guide includes the following topics:

- [Getting Started on page 2](#)
- [Previewing the New Features on page 3](#)
- [Installing the KODAK Orthodontic Imaging Software on page 4](#)
- [Upgrading the KODAK Orthodontic Imaging Software on page 7](#)
- [Installing the KODAK CR 7400 Digital Radiography System on page 10](#)

Accessing This Guide Electronically

When you install the Kodak orthodontic imaging software, electronic versions of this guide and other related documentation are installed on your computer. To access these electronic documents, follow these steps:

1. On the Microsoft Windows taskbar, click **Start**.
2. Select **Programs > Kodak Orthodontic Imaging Software**.
3. Select a document from the drop-down list.

The electronic documents are in PDF file format and can be opened with Adobe Reader software. If Adobe Reader software is not installed on your computer, follow these steps:

1. On the Microsoft Windows taskbar, click **Start**.
2. Select **Programs > Kodak Orthodontic Imaging Software > Install Acrobat Reader**.
3. Follow the onscreen instructions to install the software.

Related Documentation

See the following documentation for more information:

- *KODAK Digital Imaging Systems Installation Guide (CS3200)*
- *KODAK CR 7400 Digital Radiography System User Guide (5H7442)*
- KODAK Orthodontic Imaging Software Online Help
- Documentation and Help files provided with your practice management system
- Documentation and Help files provided with your operating system or computer
- Documentation and Help files provided with your hardware peripherals, such as scanners or cameras

Important

Each time you install a software update, the contents of the online documentation folder are replaced with the latest versions of online documentation. Do not store important files in this folder.

Getting Started

Before you install the software, make sure that each computer in your network meets the minimum system requirements. For more information about system requirements, see the System Requirements document shipped with your software.

Mapping a Network Drive

Share the server's hard drive and map a drive on each workstation running the software to the drive. For information about sharing and mapping drives and folders, see the documentation and online Help provided with your Microsoft Windows operating system.

To access the Microsoft Windows online Help system, select **Start > Help** from the Windows taskbar.

Backing Up Data

Before you install the software, you should back up your data. For information about backing up your data, see the documentation provided by your backup media vendor.

Using X-Rays Properly

X-rays are dangerous if used improperly. Follow the instructions and warnings in this manual.

The Kodak 8000 digital panoramic, Kodak 9000 panoramic, Kodak 8000C digital panoramic and cephalometric, Kodak 9000C panoramic and cephalometric, Kodak 9000C 3D panoramic, and Kodak 9000 3D panoramic and cephalometric systems conform to radiological protection standards to provide protection against radiation hazards. The design of these systems permits the emission of x-rays for medical diagnostic purposes using the Kodak orthodontic imaging system. The room that contains your radiology equipment must comply with all governmental regulations applicable to protection against radiation.

To prevent hazardous conditions, carefully observe exposure safety factors and operating instructions.

Practiceworks can assist you in the initial use of your units and supply any relevant information you may require.

To install, operate, and service the unit, follow the instructions in the documentation provided with your hardware and software.

Previewing the New Features

If you want to preview the new and enhanced features in this version of the imaging software, you can watch a video from the software DVD. The preview video contains a brief overview of the new features. To hear the audio portion of the video, your computer must have a sound card and either headphones or speakers.

To run the Release Overview video, follow these steps:

1. Verify that all other programs on the server are closed, and insert the software DVD in the DVD-ROM drive of the server. The **KODAK Orthodontic Imaging** install menu is displayed.



Figure 1 KODAK Orthodontic Imaging Install Menu Window

2. Select **Preview Update Features**. The video is launched.
3. After you have viewed the video, click **Close**. The **KODAK Orthodontic Imaging** install menu is displayed.

Note

If upgrading a previous software installation, see [Upgrading the KODAK Orthodontic Imaging Software on page 7](#).

Caution!

Before performing a server installation on a computer with the Vista operating system, contact technical support for assistance.

Note

If you are installing the software using a cd, insert the cd into the CD-ROM drive.

Note

When installing the software on the Microsoft Vista operating system, one or more system security alerts are displayed. Click **Allow** to enable the installation process.

Installing the KODAK Orthodontic Imaging Software

To install the Kodak orthodontic imaging software for the first time, follow these procedures:

- Install the software on the image server.
- Register the software on the image server.
- Install the software on each workstation.
- Connect and install any imaging hardware.

Installing the Software on the Image Server

To install the Kodak orthodontic imaging software on your image server, follow these steps:

1. Exit any applications running on this computer.
2. Insert the software DVD in the DVD-ROM drive on the image server. The **KODAK Orthodontic Imaging** install menu is displayed.

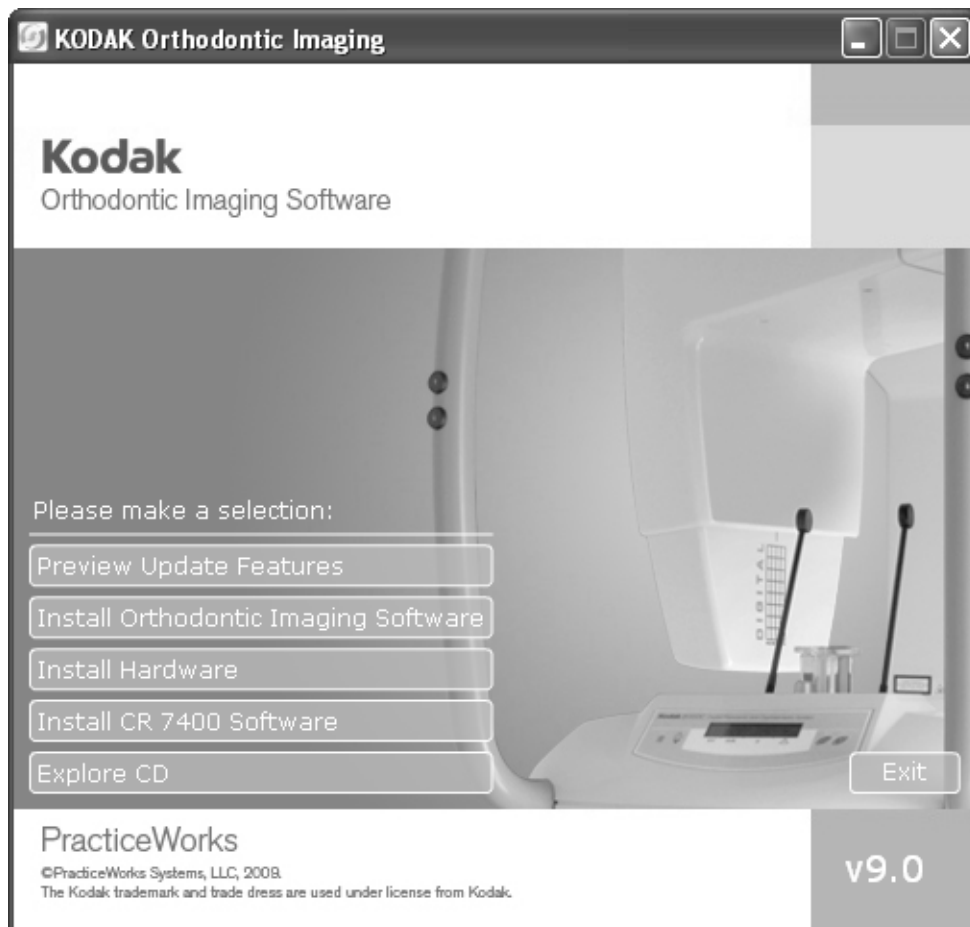


Figure 2 KODAK Orthodontic Imaging Install Menu Window

3. Select **Install Orthodontic Imaging Software**. If you are using the DR software, select **Install Imaging Software**. The **Installation Type** window is displayed.
4. Select **Image Server** and click **OK**. The **Welcome** window is displayed, reminding you to exit all programs running on this computer.
5. Verify that all programs are closed and click **Next**. The **Choose Destination Location** window is displayed.
6. Click **Next**. The software is installed.
7. Click **Finish**. A message is displayed, prompting you to restart your computer.
8. Restart your computer.

Note

The default folder location is based on your system configuration and should not be changed.

Note

If you are installing the software using a cd, when prompted remove the first cd from the CD-Rom drive and insert the second cd to install the hardware.

Registering a New Software Installation

To register a new software installation, follow these steps:

1. Open the practice management software. In most cases, the **License Installation** window is displayed, prompting you to insert your license file disk.

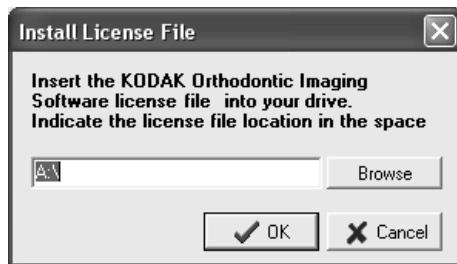


Figure 3 Install License File Window

1. Insert the license file into the correct drive on the computer, and click **OK**. The **Registration - New** window is displayed.

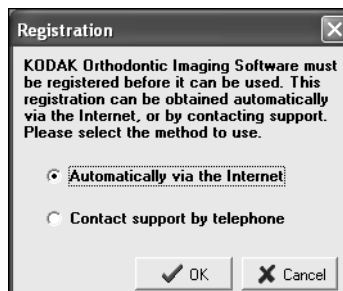


Figure 4 Registration - New Window

2. Select your preference and click **OK**:
 - To register the software on the Internet, click **Automatically via the Internet** and follow the instructions.

Important

Register the software on the image server before installing the software on a workstation.

Note

The **Install license File** window is displayed if you are not currently licensed for Kodak Orthodontic imaging software.

- To register the software over the telephone, select **Contact support by telephone** and call technical support.

The second **Registration** window is displayed.



Figure 5 Registration Window

3. Enter the registration code and click **OK**. The Kodak orthodontic imaging software is displayed.

Installing the Software on a Workstation

To install the Kodak orthodontic imaging software on a workstation, follow these steps:

1. Exit any applications running on this computer.
2. Insert the software DVD in the DVD-ROM drive on the computer. The **KODAK Orthodontic Imaging** install menu is displayed.
3. Click **Install Orthodontic Imaging Software**. If you are using the DR software, click **Install Imaging Software**.
4. If you are a new user installing software for the first time, the **Installation Type** window is displayed, asking if this computer is an image server or a workstation. Select **Workstation** and click **OK**. The **Welcome** window is displayed, reminding you to exit all programs running on this computer.
5. Verify that all programs are closed and click **Next**. The **Choose Destination Location** window is displayed.
6. Click **Next**. If you are a new user installing for the first time, the **Choose Database Location** window is displayed. Click **Browse** and navigate to your image server. Navigate to the folder containing the software database. Click the folder to select it; then click **OK**.
7. Click **Next**. The setup program copies the system files to your computer and updates the system configuration. The **Installation Complete** window is displayed, confirming that the software is successfully installed.

Note

If you register the software over the Internet, the registration code is retrieved automatically.

Note

If you are installing the software using a cd, insert the cd into the CD-ROM drive.

Note

When installing the software on the Microsoft Vista operating system, you can select **Start** from the Microsoft Windows taskbar, then type **D:\PWISetup** and press Enter, if D is the letter assigned to your DVD-ROM drive. If your DVD-ROM drive is represented by a different letter, substitute that letter for D.

Note

When installing the software on the Microsoft Vista operating system, one or more system security alerts are displayed. Click **Allow** to enable the installation process.

8. Click **Finish**. A message is displayed, prompting you to restart your computer.
9. Click **OK** to restart your computer. After your computer restarts, a message is displayed, prompting you to select the feature to install.
10. Click **Exit** and repeat these steps to install the software on each workstation in your network.

Upgrading the KODAK Orthodontic Imaging Software

To upgrade the Kodak orthodontic imaging software, follow these procedures:

- Upgrade the software on the image server.
- Register the software on the image server.
- Upgrade the software on each workstation.
- Connect and install any imaging hardware.

Upgrading the Software on the Image Server

To upgrade the Kodak orthodontic imaging software on an image server, follow these steps:

1. Exit any applications running on this computer and on each network computer containing the imaging software.
2. Insert the software DVD in the DVD-ROM drive on the image server. The **KODAK Orthodontics Imaging** install menu is displayed.



Figure 6 KODAK Orthodontic Imaging Install Menu Window

Important

The software must be installed on each network computer containing practice management software.

Caution!

Before performing a server installation on a computer with the Vista operating system, contact technical support for assistance.

Note

If you are installing the software using a cd, insert the cd into the CD-ROM drive.

Note

If you are installing the software using a cd, when prompted remove the first cd from the CD-Rom drive and insert the second cd to install the hardware.

Note

The **Install license File** window is displayed if you are not currently licensed for Kodak Orthodontic imaging software.

Note

If you receive the release code over the Internet, it is retrieved automatically.

3. Click **Install Orthodontic Imaging Software**. If you are using the DR software, click **Install Imaging Software**. The setup program copies the system files to your computer and updates the system configuration.
4. Click **Finish**. A message is displayed, prompting you to restart your computer.
5. Restart your computer. If you have digital radiography equipment installed on your computer, the hardware installation launches automatically.

Registering an Upgrade Installation

To register an upgraded software installation, follow these steps:

1. Open the practice management software. The **Release Code** window is displayed.
2. Select your preference, and click **OK**.
 - To receive your release code on the Internet, click **Automatically via the Internet** and follow the instructions.
 - To receive your release code over the telephone, select **Contact support by telephone** and call technical support.

The **Release Code** window is displayed.

3. Enter the release code, and click **OK**. The Kodak orthodontic imaging software is displayed.

Upgrading the Software on a Workstation

To upgrade the Kodak orthodontic imaging software on a workstation, follow these steps:

1. Exit any applications running on this computer.
2. Insert the software DVD in the DVD-ROM drive on the computer. The **KODAK Orthodontic Imaging** install menu is displayed.

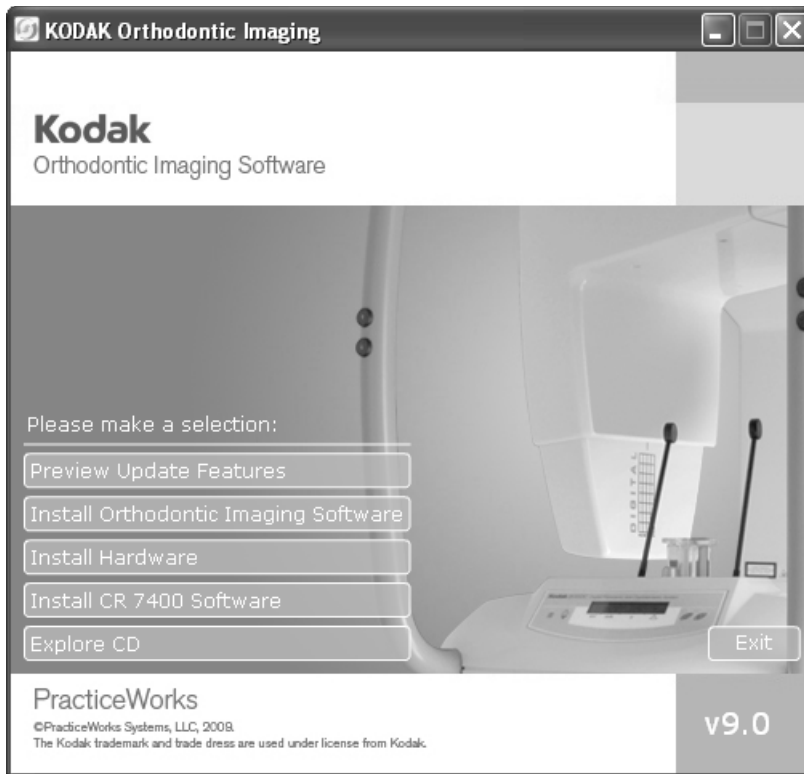


Figure 7 KODAK Orthodontic Imaging Install Menu Window

3. Click **Install Orthodontic Imaging Software**. If you are using the DR software, click **Install Imaging Software**. The **Welcome** window is displayed, reminding you to exit all programs running on this computer.
4. Verify that all programs are closed and click **Next**. The **Installation Complete** window is displayed, confirming that the software is successfully installed.
5. Click **Finish**. A message is displayed, prompting you to restart your computer.
6. Click **Finish**. A message is displayed, prompting you to restart your computer.
7. Restart your computer. If you have digital radiography equipment installed on your computer, the hardware installation launches automatically. After your computer restarts, a message is displayed, prompting you to select the feature to install.
8. Click **Exit** and repeat these steps to install the software on each workstation in your network.

Important

You must turn on the *image server*. The software will check to ensure the upgrade was run on the *image server*. If it does not find the upgrade, an error is displayed.

Note

If you are installing the software using a cd, insert the cd into the CD-ROM drive.

Note

When installing the software on the Microsoft Vista operating system, you can select **Start** from the Microsoft Windows taskbar, then type **D:\PWISetup** and press Enter. If your DVD-ROM drive is represented by a different letter, substitute that letter for D.

Note

The default folder location is based on your system configuration and should not be changed.

Note

If you are installing the software using a cd, when prompted remove the first cd from the CD-Rom drive and insert the second cd to install the hardware.

Installing the KODAK CR 7400 Digital Radiography System

Important

For information on setting up your system, see the **KODAK CR 7400 Digital Radiography System Installation Guide (AT074412)**.

To install the KODAK CR 7400 digital radiography system, complete the following in this order:

- Install the drivers.
- Install the software.

To install the Kodak CR 7400 software, follow these steps:

1. To launch the installation wizard, insert the KODAK Orthodontic Imaging software DVD in the DVD-ROM drive on your computer. The **KODAK Orthodontic Imaging** install menu is displayed.
2. Click **Install Kodak CR 7400 Software**.

The **KODAK CR 7400 System** window is displayed, and the automated installation is immediately launched.

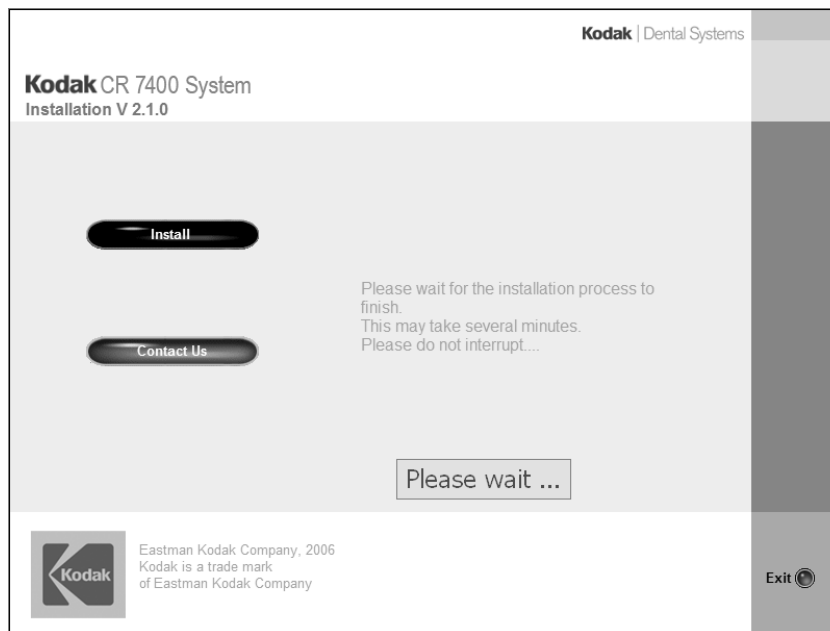


Figure 8 Kodak CR 7400 System Window

3. When the automated installation is complete, click **OK** when prompted.